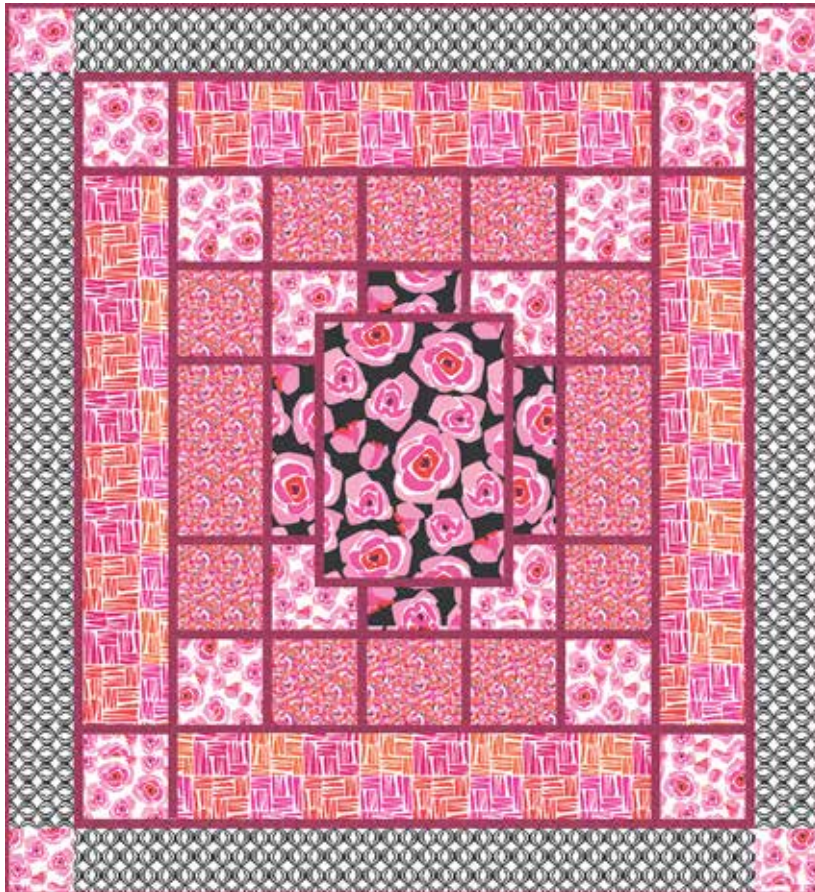


# Hybrid

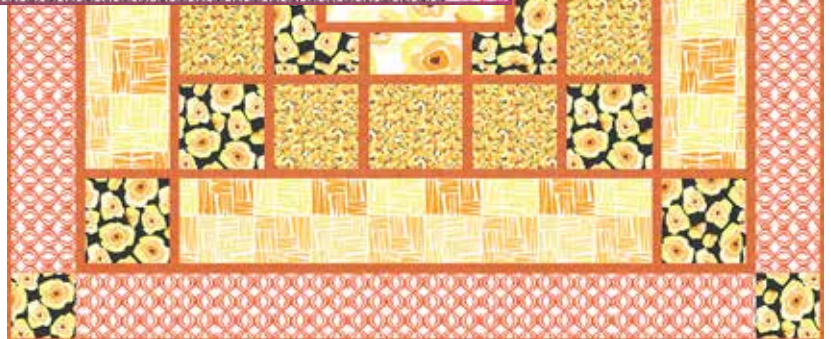
BY JANE DIXON



Roses in Bloom Quilt  
designed by:  
**Jean Ann Wright**

Quilt Size: **86" x 94"**

[andoverfabrics.com](http://andoverfabrics.com)



## About Hybrid

Featuring elegant roses and fun, bright hues, Hybrid is sure to bring a splash of sophistication to your next floral project. —

*Jane Dixon*

andover

•  
• makower uk  
• *The Henley Studio*  
•

Free Pattern Download Available

1384 Broadway New York, NY 10018  
Tel. (800) 223-5678 • [andoverfabrics.com](http://andoverfabrics.com)

# Roses in Bloom Quilt



Introducing Andover Fabrics new collection: **HYBRID** by Jane Dixon

Quilt designed by Jean Ann Wright

Quilt finishes 86" x 94"

*What is more romantic than a bed of roses? These lovely floral prints are enhanced with fun geometrics in this queen-size quilt. The big patches with pink or yellow and a touch of black are joined with simple sashing that goes together easily. Choose whichever color way fits your decorating needs.*

## Cutting Directions

**Note:** Read assembly directions before cutting patches. All measurements are cut sizes and include ¼" seam allowances. Strips and borders are cut the exact lengths required plus ¼" seam allowances. WOF designates the width of fabric from selvedge to selvedge (approximately 42" wide).

**Fabric A** Cut (1) rectangle 19½" x 27½"  
Cut (2) rectangles 5" x 18½"  
Cut (2) rectangles 5" x 10½"

**Fabric B** Cut (2) rectangles 9½" x 18½"  
Cut (2) rectangles 9½" x 10½"  
Cut (8) squares 9½" x 9½"

**Fabric C** Cut (2) borders 9½" x 58½", cut lengthwise  
Cut (2) borders 9½" x 50½", cut lengthwise

**Fabric D** Cut (2) borders 7½" x 80½", cut lengthwise  
Cut (2) borders 7½" x 72½", cut lengthwise

**Fabric E** Cut (8) squares 9½" x 9½"  
Cut (4) squares 7½" x 7½"  
Cut (4) rectangles 5" x 9½"  
Cut (4) squares 5" x 5"

## Fabric Requirements

		Yardage	Rose	Yellow
<b>Fabric A</b>	blocks	1 yard	8076-K	8076-O
<b>Fabric B</b>	border	1¼ yards	8077-KE	8077-O
<b>Fabric C</b>	border	1¾ yards	8078-KE	8078-O
<b>Fabric D</b>	border	2½ yards	8079-K	8079-O
<b>Fabric E</b>	border	1¼ yards	8124-KE	8124-OK
<b>*Fabric F</b>	borders	2 yards	1867-E2	1867-O9
<b>Backing</b>		8 yards	8077-KE	8077-O

\*includes binding

**Fabric F** Cut (10) strips 2½" x WOF for binding  
Cut (27) strips 1½" x WOF, pieced to make the following:

For center: (2) 27½" strips  
(2) 21½" strips

For border 1: (8) 5" strips

For border 2: (2) 50½" strips  
(2) 38½" strips  
(12) 9½" strips

For border 3: (4) 70½" strips  
(2) 58½" strips  
(4) 9½" strips

For border 4: (2) 80½" strips

**Backing** Cut (3) panels 34" x 94", pieced to fit quilt top with overlap on all sides

## Making the Quilt

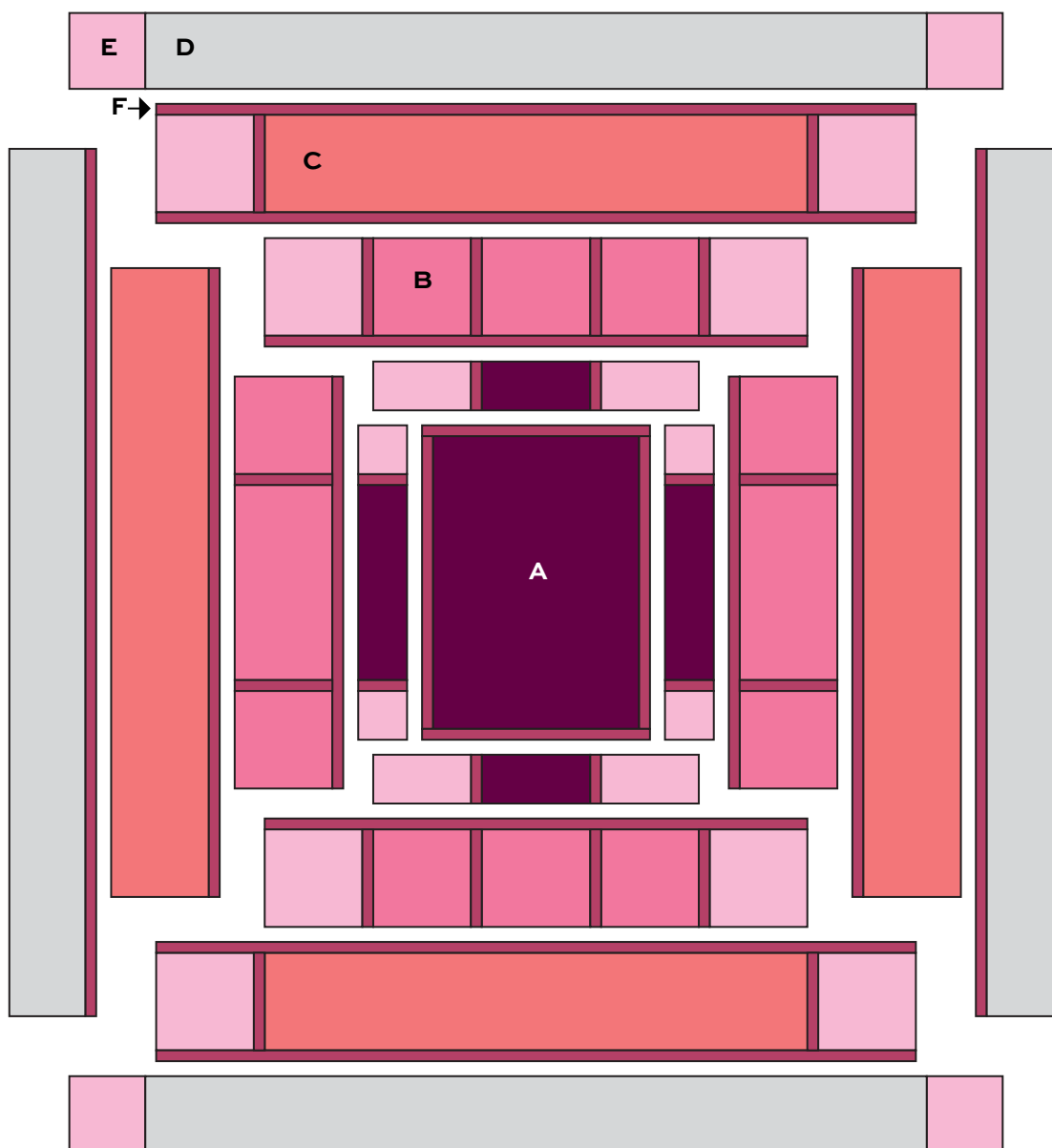
1. Cut the patches, strips, and borders as listed in the cutting instructions. To make the center panel, sew the Fabric F 27½" strips to the sides of the Fabric A rectangle. Sew the Fabric F 21½" strips to the top and bottom of the A.
2. Border 1: Referring to the Quilt Diagram, sew Fabric F 5" strips to the ends of a Fabric A 18½" rectangle. Join a Fabric E 5" square to each end. Make 2 borders like this. Matching centers and ends, sew these borders to the sides of the center panel.
3. Sew Fabric F 5" strips to the ends of a Fabric A 10½" rectangle. Sew a Fabric E 5" x 9½" rectangle to each end. Repeat to make a second border. Sew these borders to the top and bottom of the center panel.
4. Border 2: Sew Fabric F 9½" strips to both ends of a Fabric B 18½" rectangle. Sew a Fabric B 9½" square to each end. Matching centers and ends, sew a Fabric F 38½" strip to a long side of this border. Repeat. With the F strips toward the center panel, sew these borders to the sides of the quilt.

# Roses in Bloom Quilt

5. Sew Fabric F  $9\frac{1}{2}$ " strips to both ends of a Fabric B  $10\frac{1}{2}$ " rectangle. Sew a Fabric B  $9\frac{1}{2}$ " square to each end, and then add a Fabric F  $9\frac{1}{2}$ " strip and a Fabric E  $9\frac{1}{2}$ " square to each end. Sew to the top and bottom of the quilt.
6. Border 3: Matching centers and ends, sew a Fabric F  $58\frac{1}{2}$ " strip to a Fabric C  $58\frac{1}{2}$ " border. Repeat. With the F strips toward the center, sew these borders to the sides of the quilt.
7. Sew Fabric F  $9\frac{1}{2}$ " strips to ends of a Fabric C  $50\frac{1}{2}$ " border. Join Fabric E  $9\frac{1}{2}$ " squares to both ends. Sew Fabric F  $70\frac{1}{2}$ " strips to both long sides of the border. Repeat. Sew these borders to the top and bottom of the quilt.
8. Border 4: Matching centers and ends, sew a Fabric F  $80\frac{1}{2}$ " strip to a Fabric D  $80\frac{1}{2}$ " border. Repeat. With the F strips toward the center, sew borders to the sides of the quilt.
9. Join a Fabric E  $7\frac{1}{2}$ " square to each end of a Fabric D  $72\frac{1}{2}$ " border. Repeat. Join these borders to the top and bottom of the quilt.

## Finishing the Quilt

10. Layer the quilt with batting and backing and baste. Quilt in the ditch around borders and block patches. Quilt around the printed motifs in the blocks and outer border. Bind to finish the quilt.



Quilt Diagram

# Hybrid

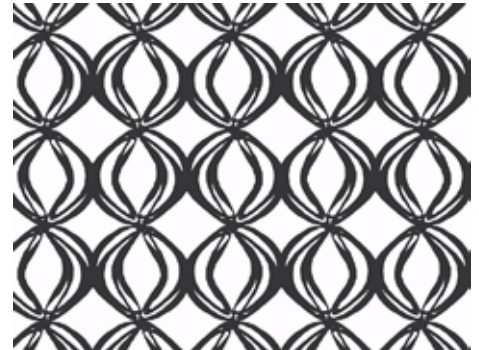
BY JANE DIXON



8076-K



8076-O



8079-K



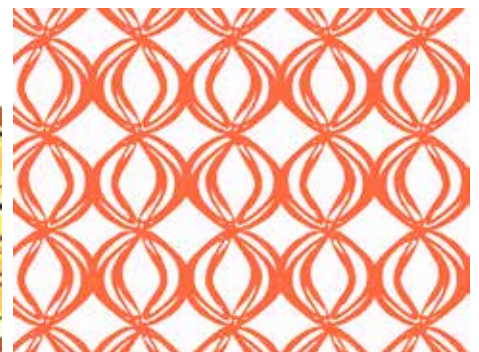
8078-KE



8078-O



8079-KE



8079-O



8077-KE



8077-O



8124-KE



8124-OK



1867-E2



1867-O9

All fabrics are used in quilt pattern. Fabrics shown are 25% of actual size.

andover



makower uk  
*The Henley Studio*

Free Pattern Download Available

1384 Broadway New York, NY 10018  
Tel. (800) 223-5678 • andoverfabrics.com